

# Calibration and Metrology Compensation Survey highlights

**FLUKE**

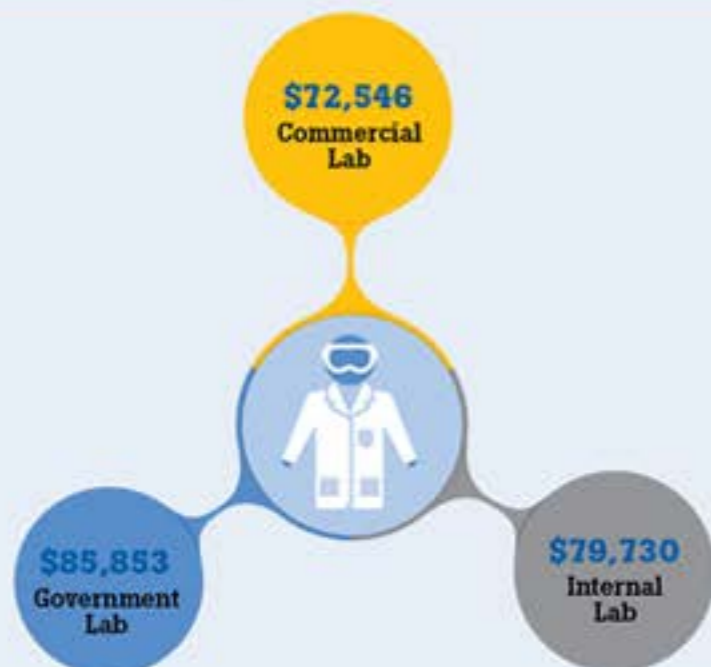
Calibration

## AVERAGE SALARY RANGES BY GEOGRAPHY

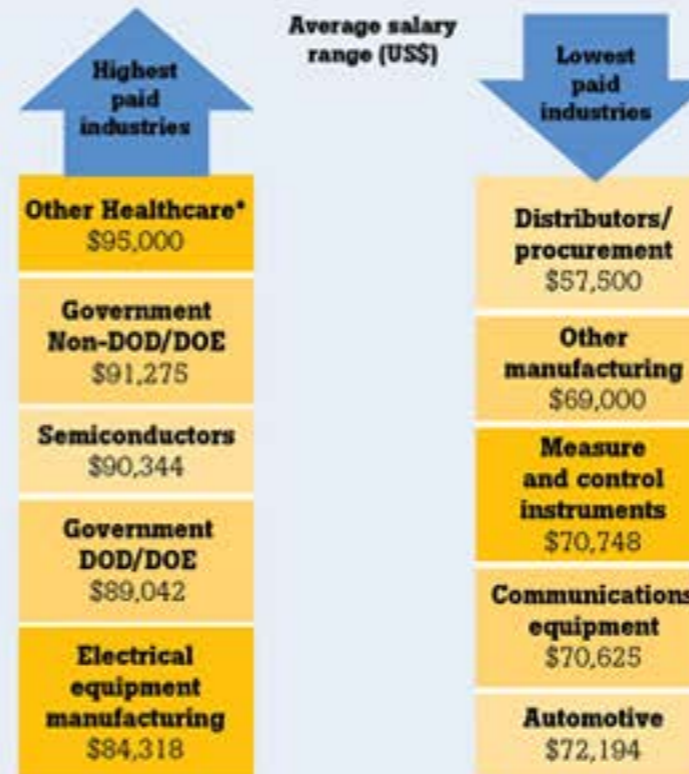


- 1 Pacific \$87,250
- 2 Mountain West \$75,773
- 3 West North Central \$80,764
- 4 West South Central \$74,940
- 5 South Atlantic \$76,518
- 6 East South Central \$76,250
- 7 East North Central \$72,360
- 8 Mid Atlantic \$78,569
- 9 New England \$81,987

## LAB TYPES



## HIGHEST AND LOWEST INDUSTRY PAY BY REGION

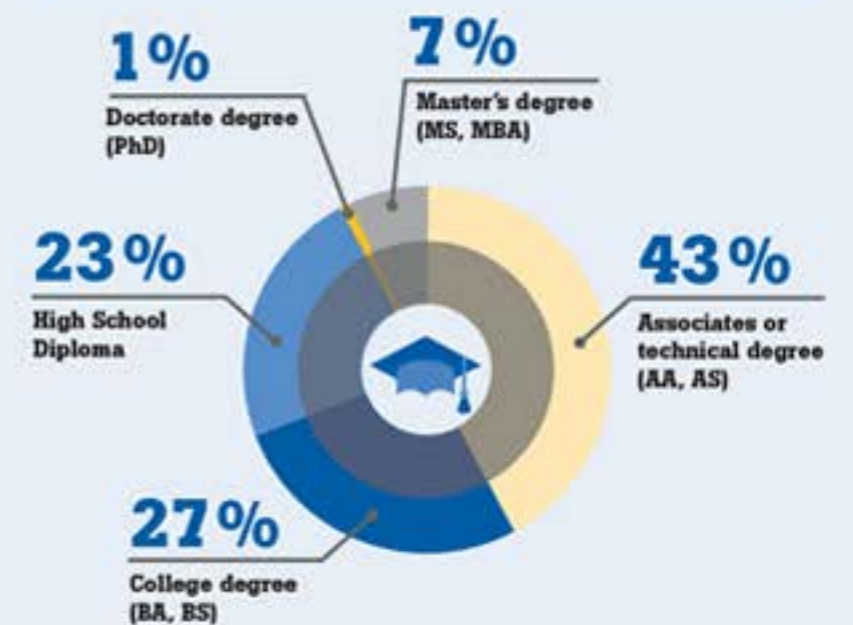


\*Note "Other Healthcare" excludes medical devices and pharmaceutical companies.

## AVERAGE SALARY BY JOB ROLE



## EDUCATION



## GENDER

