

Manual Supplement

Manual Title:	732C/734C Operators	Supplement Issue:	1
Part Number:	Web Only	Issue Date:	10/21
Print Date:	August 2018	Page Count:	2
Revision/Date:			

This supplement contains information necessary to ensure the accuracy of the above manual.

Change #1

On page 11, under **Selecting Line Voltage and Accessing the Fuse**, replace steps 3 and 4 with:

3. Use the screwdriver to pry the fuse holder tab and slide out the fuse holder. The spare fuse is on the left side of the fuse holder and is not an active part of the protection circuit.
4. Replace the fuse that is on the right side of the fuse holder. See the data on the rear panel or Figure 2 to check for the correct fuse type and rating.

On page 14, replace the figure with:

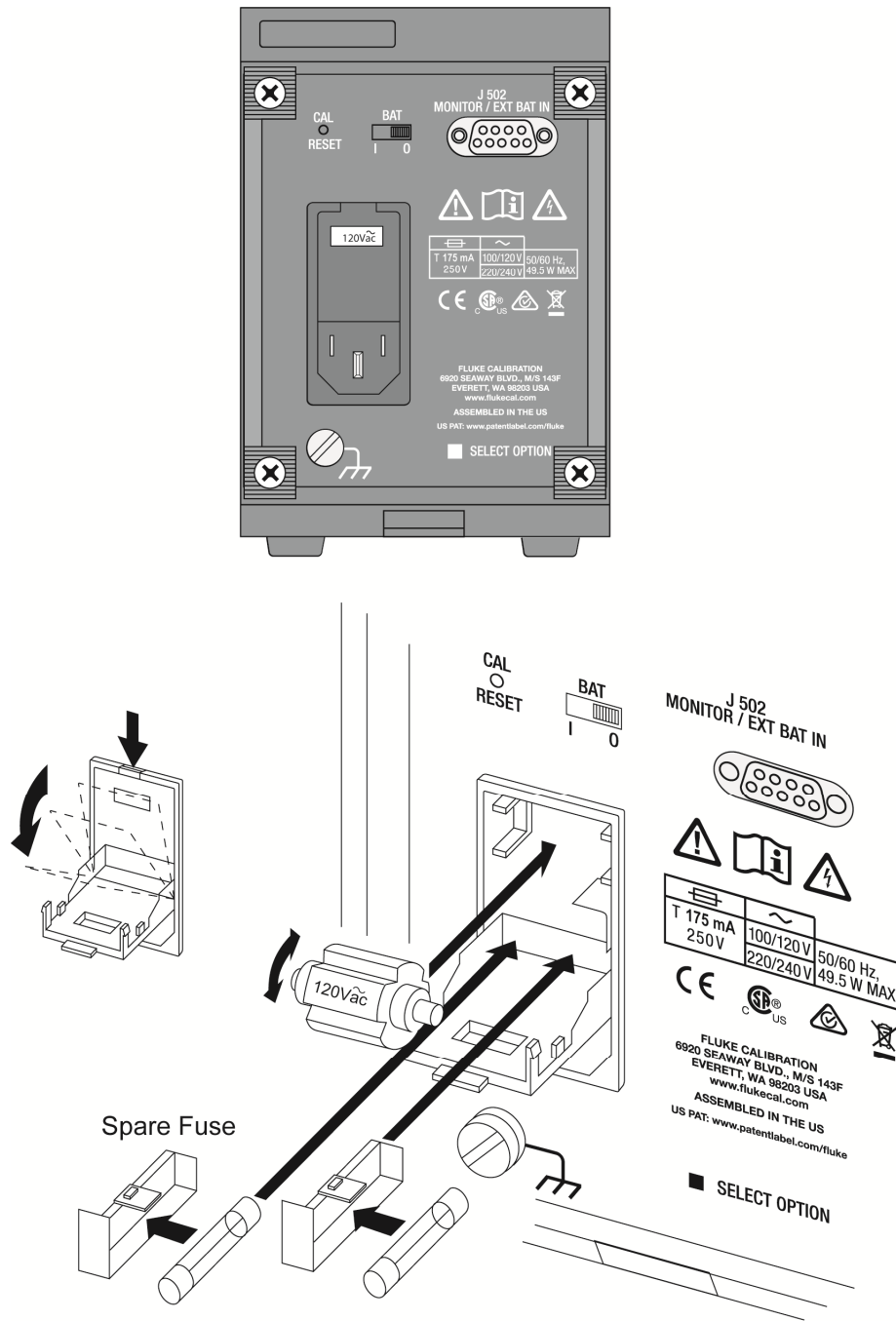


Figure 2. Line Power Label and Fuse Location

On page 27, replace both figures:

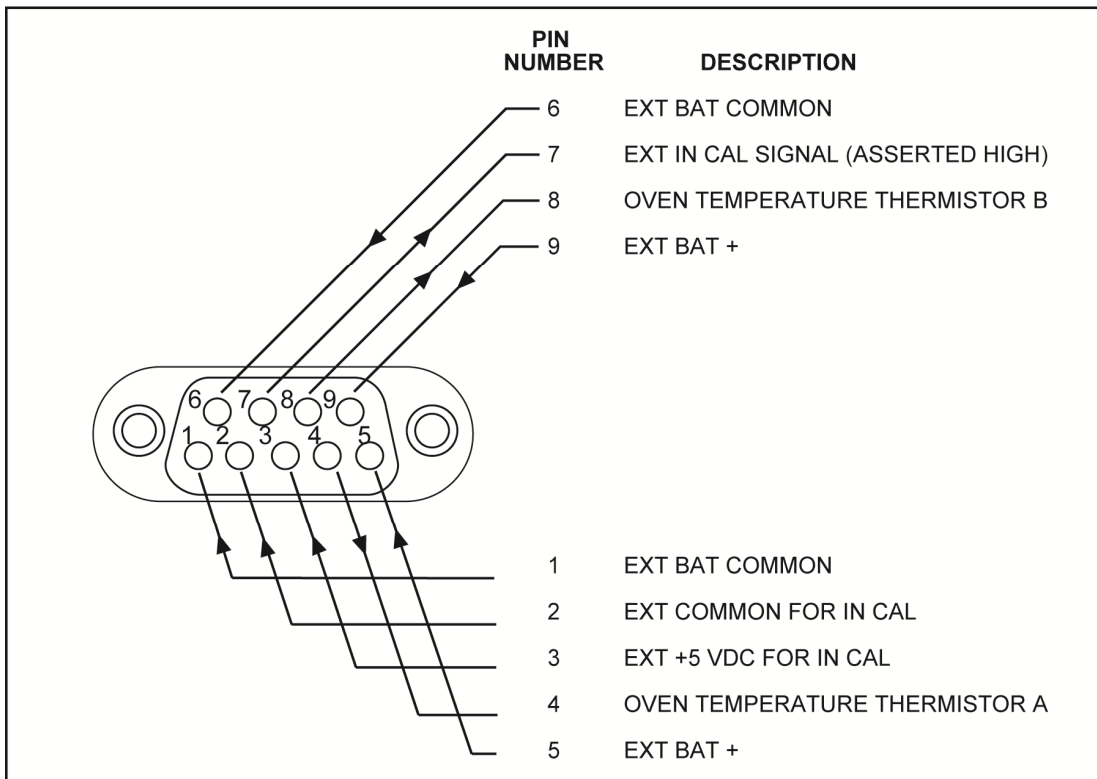


Figure 10. 732C MONITOR/EXT BAT IN Connector Pinout

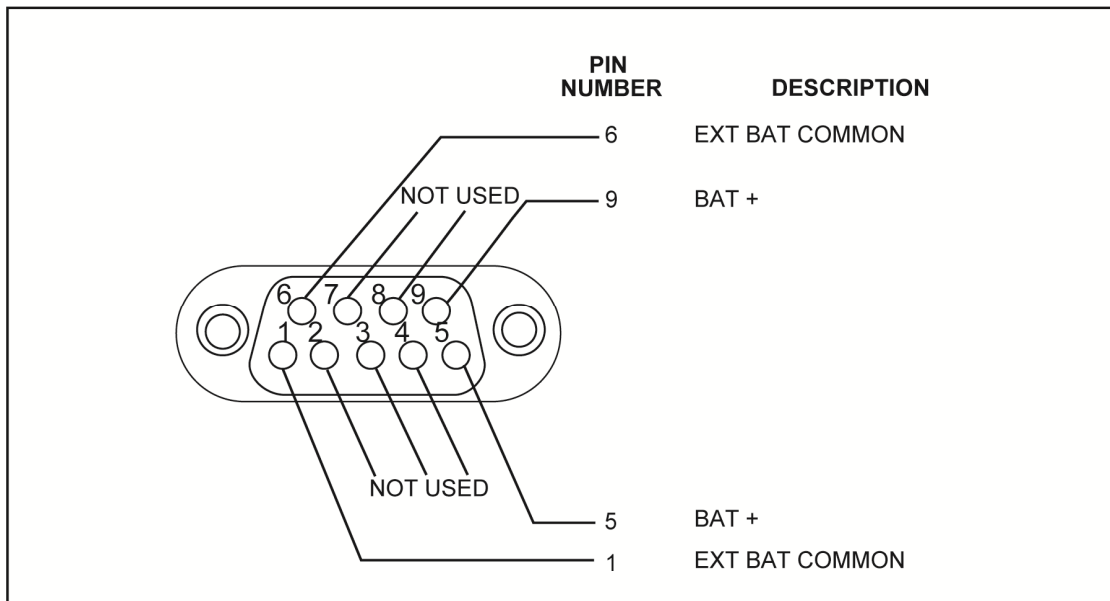


Figure 11. 732C-7001 BAT OUT Connector Pinout

On page 53, in Table 13, in the **△**F1 row, change the **Qty** to 2.