

Manual Supplement

Manual Title:	6100B/6105A Users	Supplement Issue:	5
Part Number:	3499335	Issue Date:	5/18
Print Date:	September 2009	Page Count:	6
Revision/Date:	1, 6/10		

This supplement contains information necessary to ensure the accuracy of the above manual.

Change #1, 55882

On page 1-8, under **1-18. Electrical Specifications**, replace the paragraph with the following:

The accuracies stated include the calibration uncertainty provided by Fluke Service Centers. In the following specifications, uncertainty is stated at coverage factor $k = 2$, equivalent to 95 % confidence level, in accordance with accepted metrology practices.

On pages 1-19 and 1-20, in the tables under sections **1-46, 1-47, and 1-50**,

Change: **Voltage at 7 % to 100 % of Range**

To: **Voltage at 70 % to 100 % of Range**

Change #2

On page 4-10, replace Figure 4-9 with:

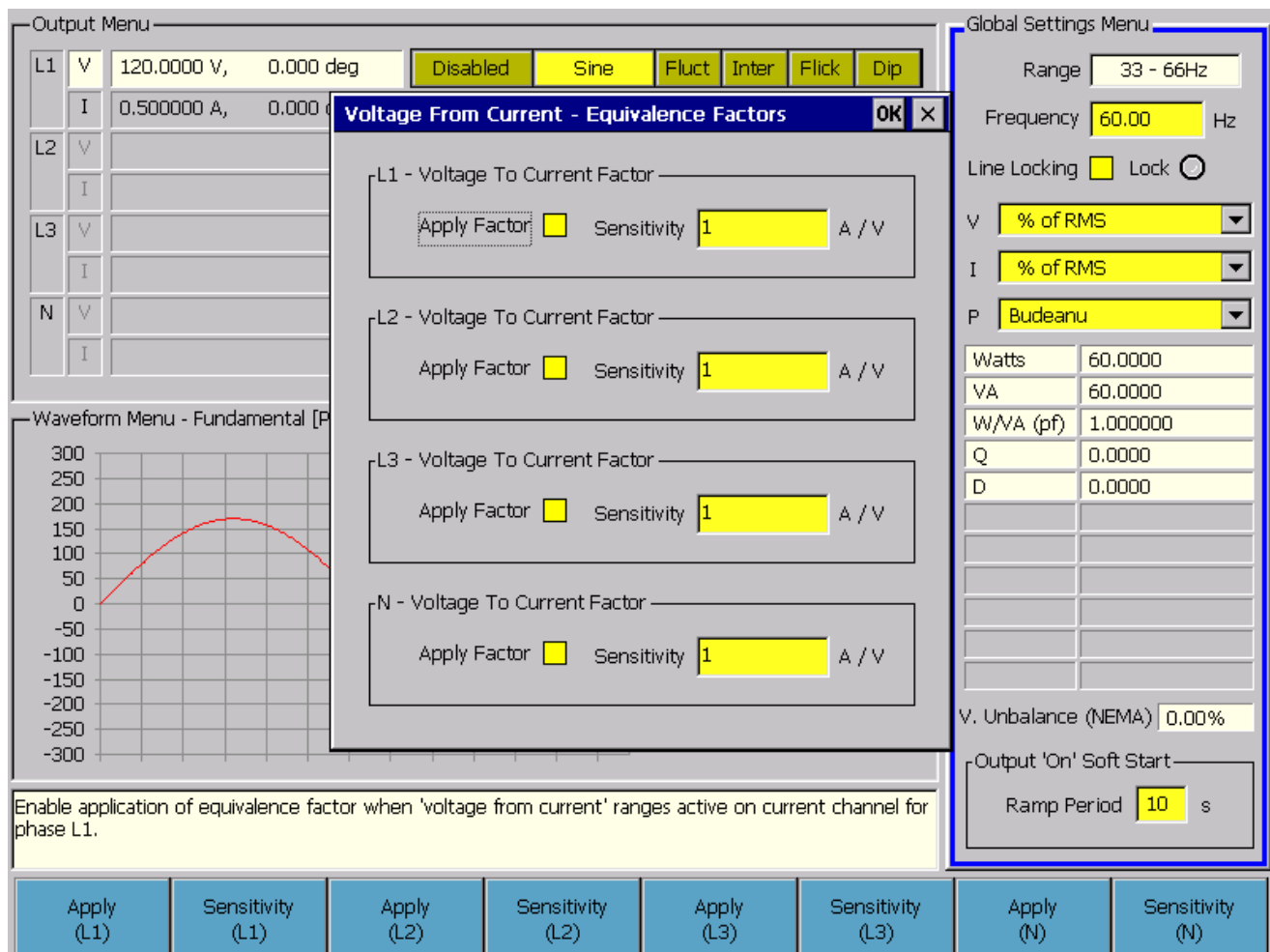


Figure 4-9. Voltage from Current

gdw45.bmp

Change #3

On page 3-16, replace Figure 3-13, with:

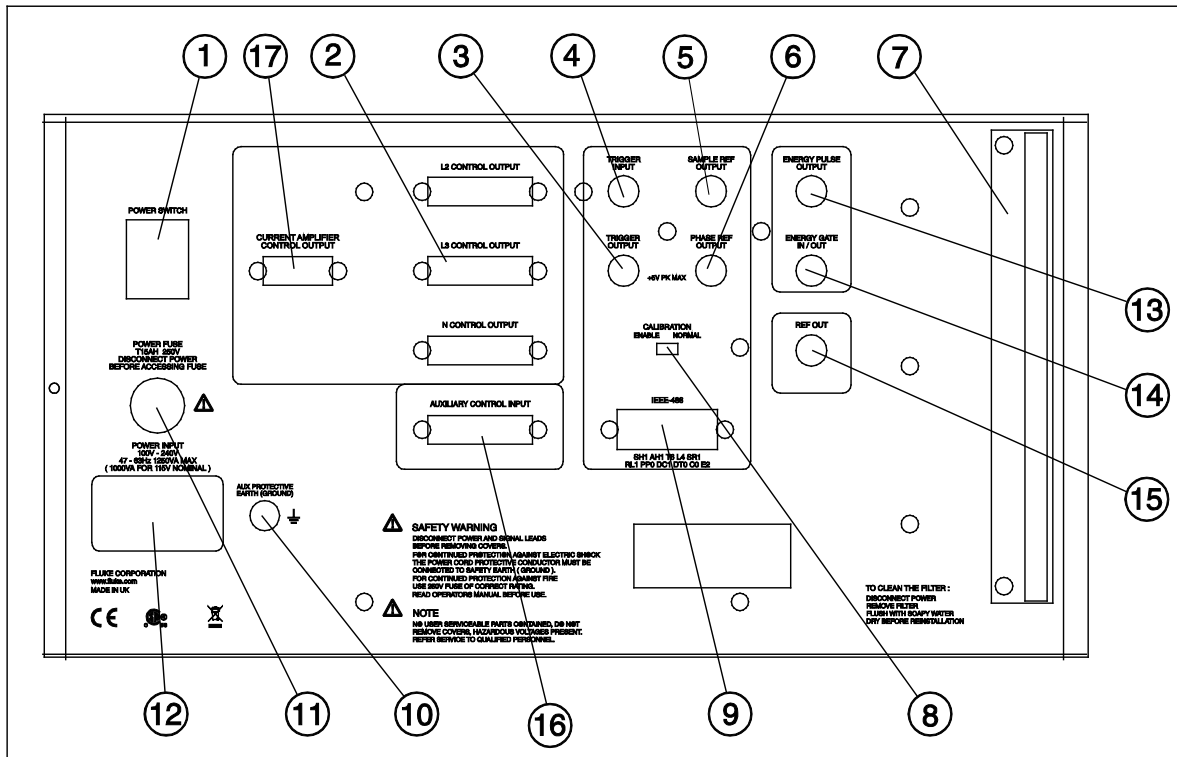


Figure 3-13. Rear-Panel Features

gdw07.eps

On page 3-17, Table 3-2, add:

17	52120A Current Amplifier Control Output connection.
----	---

On page 4-8, replace Figure 4-6, with:

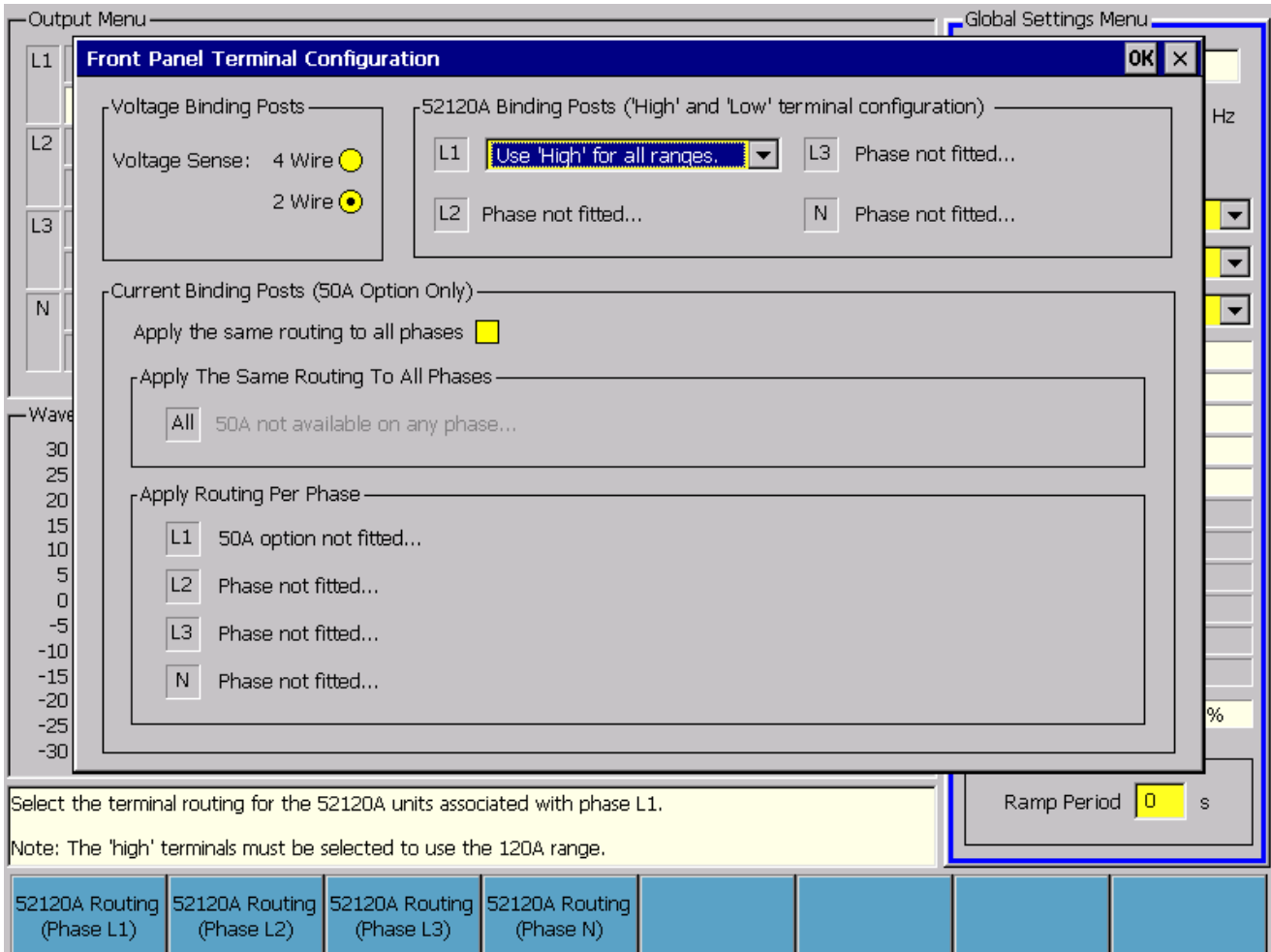


Figure 4-6. Front-Panel Terminal Configuration

gdw43.bmp

On page 4-38, following the Note, add:

Operation with 52120A Current Amplifier

6100B, 6101B, 6105A and 6106A current output capability can be extended to 120 A by connecting a 52120A. Up to 360 A can be achieved with three 52120A connected with their current outputs in parallel. Refer to the 52120A User’s Manual to find out how to connect one or more 52120A to a 6100B.

When one to three 52120A are connected to the 6100B, the current output range list is extended to show the number of 52120A connected and the selected 52120A range. For example when three 52120A are connected the current range selection includes the selection 3xExt 2A, 3xExt 20A and 3xExt 120A. See Figure 4-45. Note that in place of the Bandwidth selection you can select 52120A L Comp On or Off.

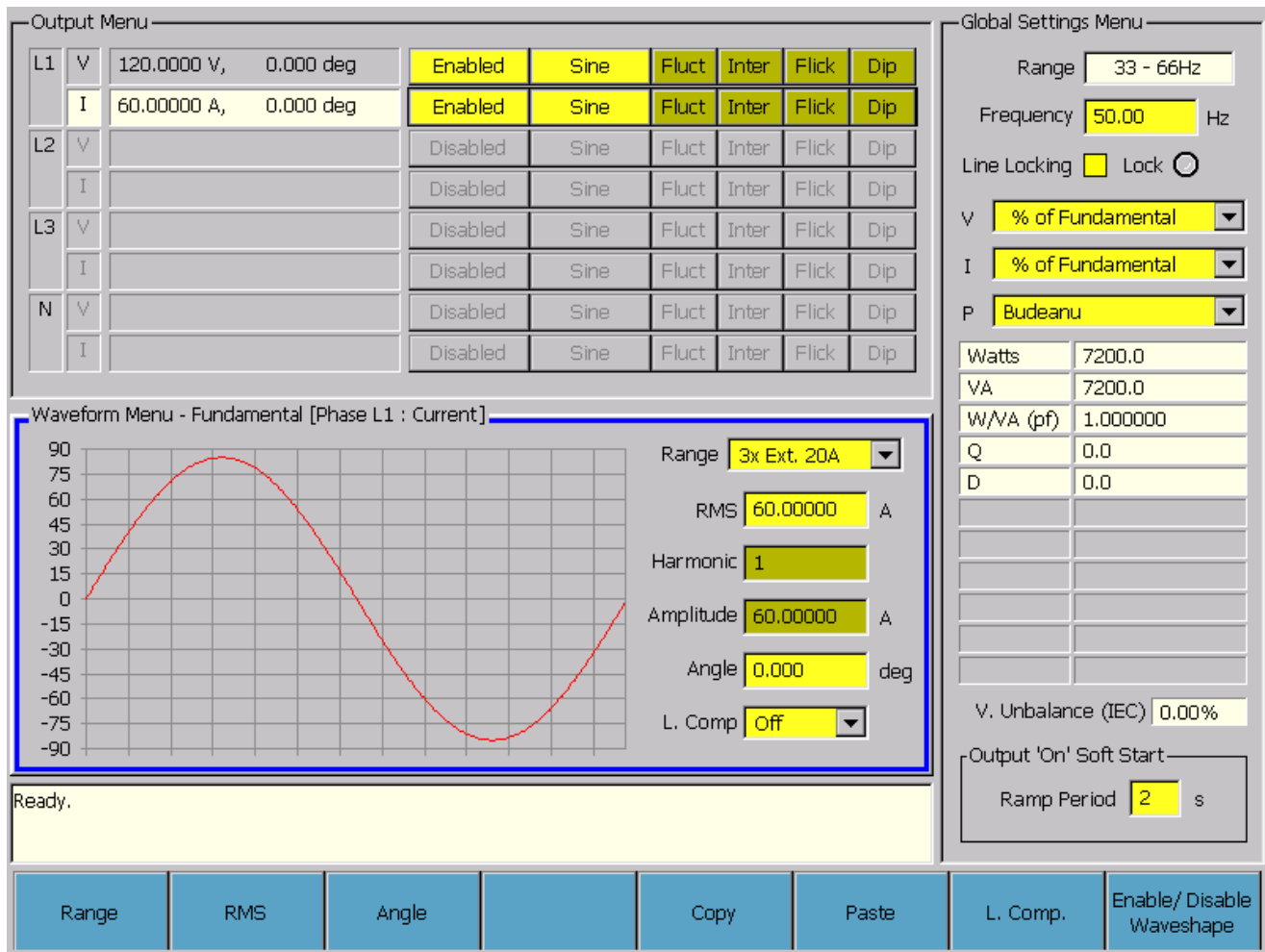



Figure 4-45. Output Menu

Refer to the 52120A User’s Manual for remote operation of 52120A connected to a 6100B.

Change #4, 428

On page 1-4 add the following to the **Symbols** table:

	Conforms to relevant South Korean EMC Standards
---	---

On page 1-6, replace **1-12. Environment** and **1-14. EMC** with:

Environment

Operating temperature	5 °C - 35 °C
Calibration temperature (tcal) range	16 °C - 30 °C
Storage temperature	0 °C - 50 °C
Transit temperature	-20 °C - 60 °C <100 hours
Warm up time	1 hour
Safe operating max. relative humidity (non-condensing)	<80 % 5 °C - 31 °C ramping linearly down to 50 % at 35 °C
Storage max. relative humidity (non-condensing)	<95 % 0 °C - 50 °C
Operating altitude	0 m - 2,000 m
Non-operating altitude	0 m - 12,000 m
Shock	MIL-PRF-28800F class 3
Vibration	MIL-PRF-28800F class 3
Enclosure	MIL-PRF-28800F class 3
Electromagnetic Compatibility (EMC)	<p>IEC 61326-1: (Controlled EM Environment); CISPR 11, Group 1, Class A</p> <p>Group 1 equipment: Group 1 has intentionally generated and/or use conductively coupled radio-frequency energy which is necessary for the internal functioning of the equipment itself.</p> <p>Class A equipment is equipment suitable for use in all establishments other than domestic and those directly connected to a low voltage power supply network which supplies buildings used for domestic purposes. Caution - There may be potential difficulties in ensuring electromagnetic compatibility in other environments, due to conducted and radiated disturbances.</p> <p>Emissions which exceed the levels required by CISPR 11 can occur when the equipment is connected to a test object.</p> <p>USA (FCC) – 47 CFR 15 subpart B, this product is considered an exempt device per clause 15.103</p> <p>Korea (KCC) Class A Equipment (Industrial Broadcasting & Communication Equipment) This product meets requirements for industrial (Class A) electromagnetic wave equipment and the seller or user should take notice of it. This equipment is intended for use in business environments and not to be used in homes.</p>

Change #5, 570

On page 6-7, under **Lithium Battery Replacement**, replace the first sentence with:

The PC within this instrument is fitted with a lithium battery (3V, 180mAH, CR2032 coin cell). Battery life should exceed 10 years

Replace the **Caution** with:

 Caution

When a battery has not been used for 6 months, check the charge status and replace as appropriate.