

MET/CAL® Procedure Development

Instructor-led web-based training

A five-day (2-hour sessions) course on creating procedures with the latest version of MET/CAL®—without leaving your office!

Course outline

- Configuring the Run Time
- Using the Editor
- Creating Projects, Solutions, PKM and PXE files
- Running procedures
- Learn the use of the Function Select Codes (FSCs) through instructor-presented examples

Equipment and system requirements of web session

- Computer with a current version of Microsoft Internet Explorer or other web browser
- Computer monitor 17 inches or larger
- Broadband Internet connection
- Touch-tone telephone near the computer

Who should attend

This course is designed for those who are directly involved in the operation of MET/CAL calibration software and are required to write or modify procedures.

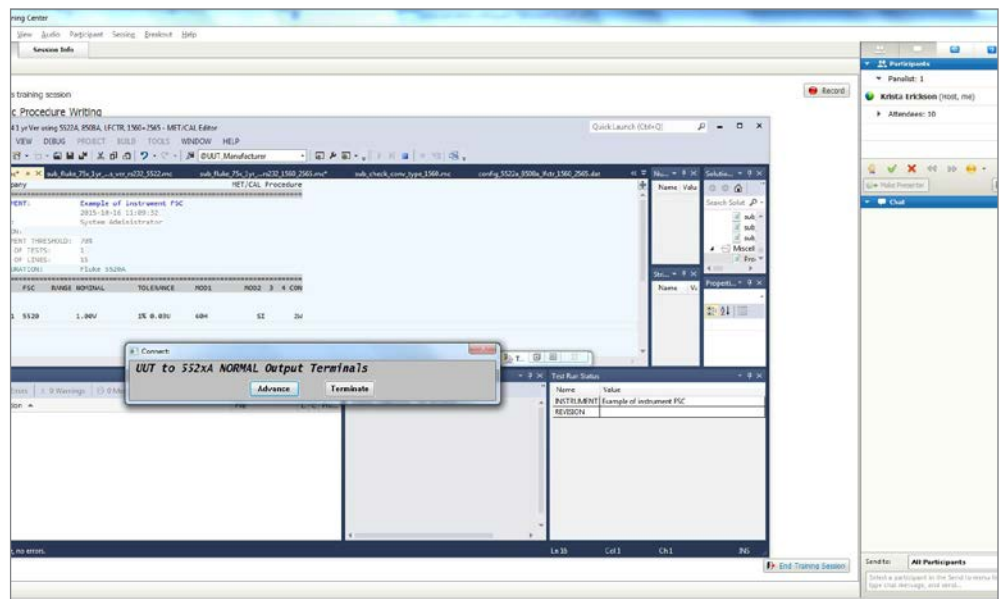
Prerequisites

You are expected to be familiar with the Microsoft® Windows® 7 or higher operating system and are advised to have some hands-on experience with MET/CAL® software prior to the class.

Course information

Course No.: TWB 1031

Course Length: Two hours on five consecutive days (10 hours total). After completing all sessions of the course, attendees will receive a



Fluke Certificate of Completion. This course provides an abbreviated version of the classroom course, MET/CAL Procedure Writing #TRC 1006, without the hands-on operation of the MET/CAL system.

Course Materials: Fluke will provide all materials needed to complete the course. You will need to provide the equipment and system requirements.

Registration

Complete and submit the on-line registration form at www.flukecal.com/training. Once you submit the form, a Fluke Calibration training representative will contact you regarding availability and to discuss payment terms. If you have an active MET/SUPPORT Gold plan or Gold CarePlan, you are eligible for a

20 % discount on course fees. Once you provide payment to finalize your registration, you will receive an email confirmation with course details. We recommend that you register at least 60 days in advance of the desired course. **Prior to the course, the student will receive a meeting invitation along with instructions for logging into the training session.**

Cancellation practice

You may cancel your training at no charge upon notifying Fluke Calibration at least two calendar weeks before your confirmed class start date. If your cancellation is received less than two weeks prior to the course start date, you will be charged the full tuition for the course. However, you may have someone else attend in your absence.

Fluke Calibration reserve the right to cancel any course that does not reach minimum enrollment two weeks prior to the class start date. Should this happen, you will be notified immediately.

Contact us

Email: training@flukecal.com

United States

877-292-3225 (toll free)
+1 425-446-5500 (international)

Canada

800-36-FLUKE (toll free)
905-890-7600 (international)

Europe (United Kingdom)

+44 (0) 1603 256 758

Asia (Singapore)

(65) 6799-5960

Visit the website at:
www.flukecal.com/training,
for the latest Fluke Calibration
has to offer in calibration and
metrology training.

Fluke Calibration. *Precision, performance, confidence.™*

Electrical	RF	Temperature	Pressure	Flow	Software
------------	----	-------------	----------	------	----------

Fluke Calibration

PO Box 9090,
Everett, WA 98206 U.S.A.

Fluke Europe B.V.

PO Box 1186, 5602 BD
Eindhoven, The Netherlands
Web access: <http://www.flukecal.eu>

For more information call:

In the U.S.A. (877) 355-3225 or Fax (425) 446-5716
In Europe/M-East/Africa +31 (0) 40 2675 200 or Fax +31 (0) 40 2675 222
In Canada (800)-36-FLUKE or Fax (905) 890-6866
From other countries +1 (425) 446-6110 or Fax +1 (425) 446-5716
Web access: <http://www.flukecal.com>

©2016 Fluke Calibration. Specifications subject to change without notice.
Printed in U.S.A. 10/2016 2393985d-en

Modification of this document is not permitted without written permission from Fluke Calibration.