

# Y1586 Rack-Mount Kit

## Instruction Sheet

### Introduction

This sheet explains how to use the rack-mount kit (the Kit) to mount the 1586A Series Data Acquisition System (the Product) into a standard 19-inch rack panel.

#### **⚠ Warning**

**To prevent possible injury, do not restrict access to the Product power cord, which is the mains disconnecting device. If access to the power cord is inhibited by rack mounting, a properly rated accessible proximate mains disconnecting switch must be provided as part of the installation.**

### Preparation

Before the Kit is installed, remove the handle, bezels, and two screws from the Product, see Figure 1:

1. Place the Product on a flat surface and rotate the Product handle to the vertical position.
2. Pull one side of the handle outward, away from the Product until free. Pull the other side of the handle out, away from the Product.
3. Pry and pull the bezels from the Product.
4. Remove the rear-side screws (2) from the Product.

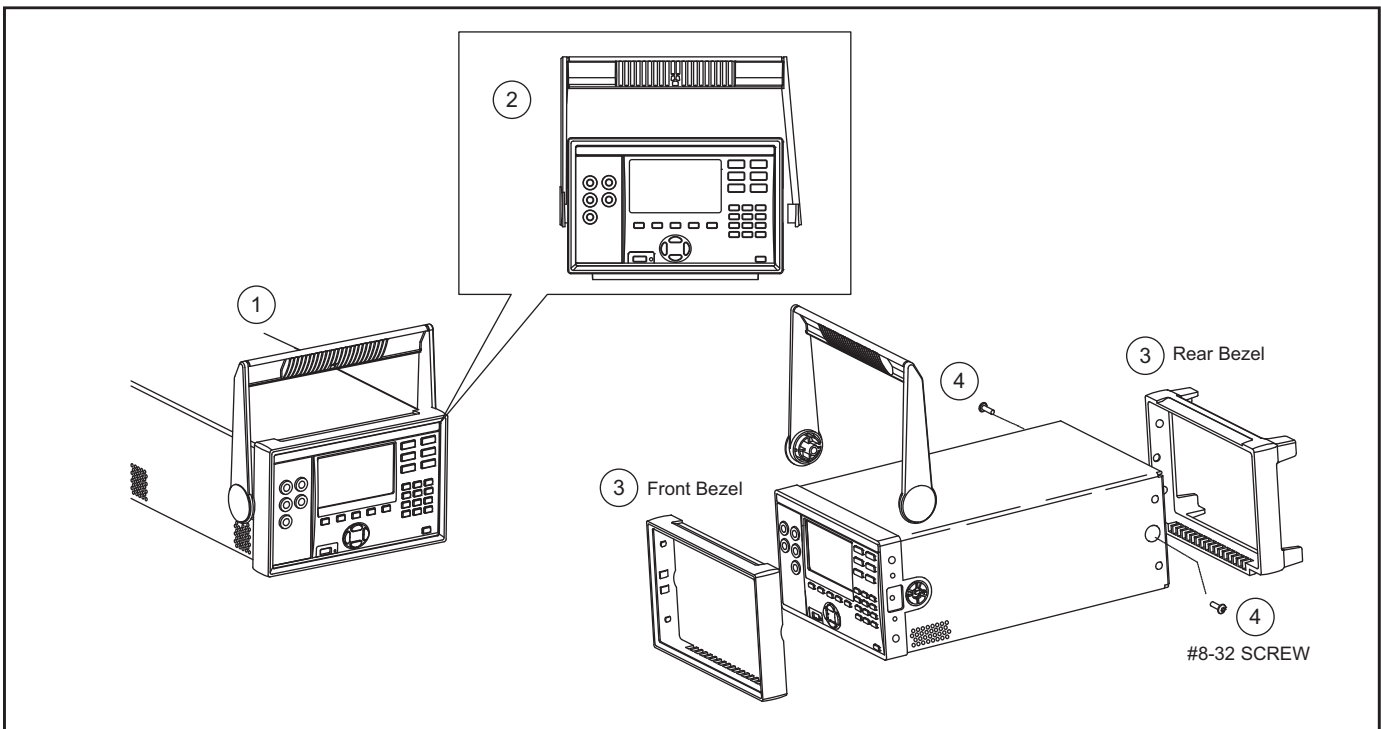


Figure 1. Preparation

hum101.eps

## Install a Single Rack-Mount Kit

Use the Kit to mount the Product on the left or right side of a standard 19-inch rack. See Figure 2.

To mount the Product on the left-side of the rack:

1. Attach one of the rack brackets to the right-front side of the Product with three #8-32 x 1/2 inch panhead screws. Keep the bracket face with the three holes facing toward the front.
2. Attach the other rack bracket to the left-front side of the Product with three #8-32 x 1/2 inch panhead screws.

3. With three panhead hex screws (M6), and three nuts, fasten the left-side of Rack Faceplate to the right side of rackmount.
4. Install the entire assembly into the rack. From the rear of the rack, align the assembly to the holes in the rack. At the front of the rack, use six panhead hex screws (M6) to fasten the Rack Faceplate and Rack Screw Plate through the rack and Rack Brackets.

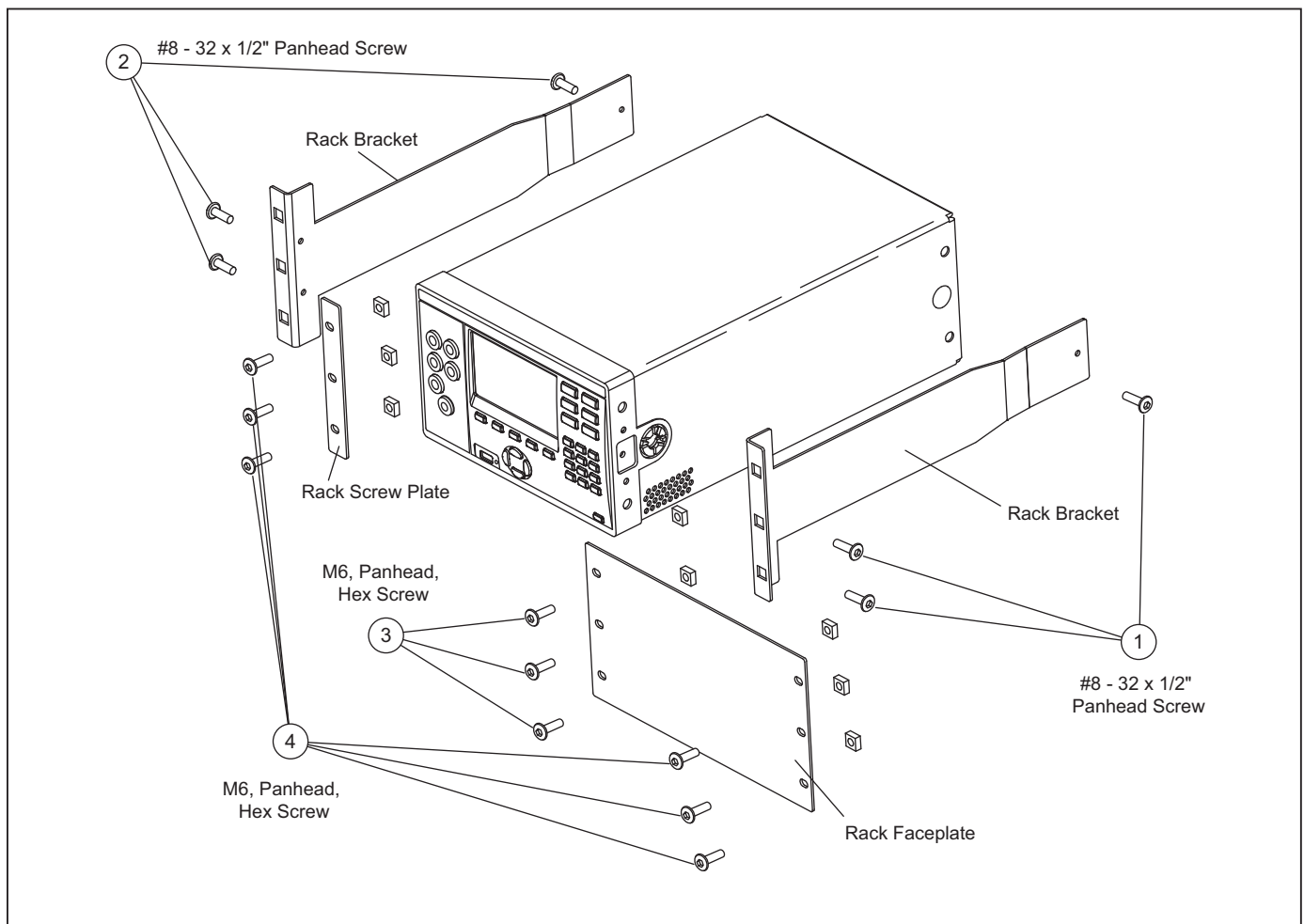


Figure 2. Single Rack-Mount Kit

hum102.eps

## Install a Dual Rack-Mount Kit

To install a Dual Kit, see Figure 3:

1. Place both Products side-by-side on a flat surface and use three #8-32 x 1/2-inch panhead screws to install the Rack Bracket to the outer left and right sides of the Product. Refer to step 1 under *Install a Single Rack-Mount Kit*.
2. Attach the Inner Rack Bracket to the inner right and left sides of both Products with six #8-32 x 1/2-inch panhead screws.
3. Attach the Inner Rack Bracket to the inner right and left sides of both Products with six #8-32 x 1/2-
- inch panhead screws and insert the two guide pins into the two holes in both sides of the Inner Rack Bracket.
4. Align the front tabs of the Inner Rack Brackets, and fasten a Rack Screw Plate to the front tabs of with two #8-32 x 1/2-inch panhead screws.
5. Install the entire assembly from the rear of the rack, aligning the holes of the Rack Bracket to the inside of the rack frame. At the front of the rack, use six panhead hex screws (M6) to fasten the Rack Faceplate and Rack Screw Plate through the rack and Rack Brackets.

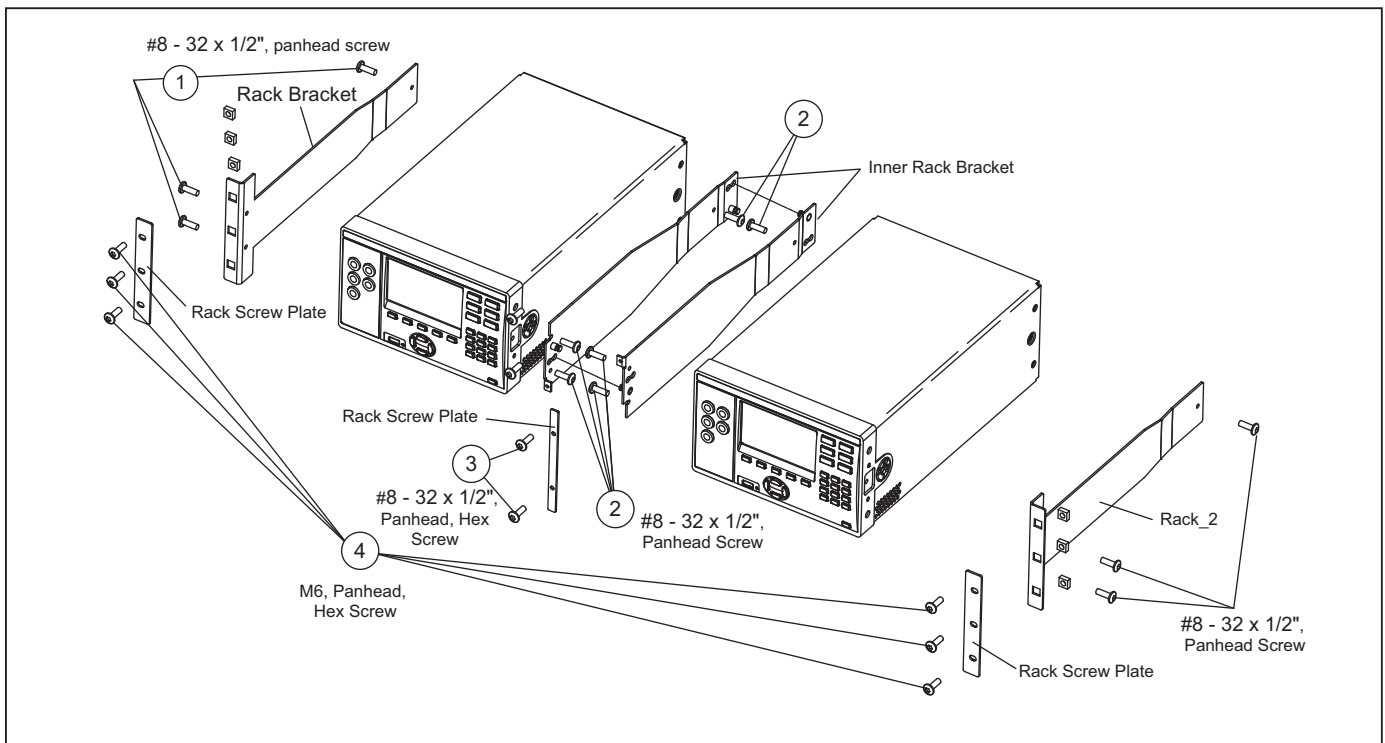


Figure 3. Dual Rack Mount-Kit

hum103.eps

## **Contact Fluke Calibration**

To contact Fluke Calibration, call one of the following telephone numbers:

- Technical Support USA: 1-877-355-3225
- Calibration/Repair USA: 1-877-355-3225
- Canada: 1-800-36-FLUKE (1-800-363-5853)
- Europe: +31-40-2675-200
- Japan: +81-3-6714-3114
- Singapore: +65-6799-5566
- China: +86-400-810-3435
- Brazil: +55-11-3759-7600
- Anywhere in the world: +1-425-446-6110

To see product information and download the latest manual supplements, visit Fluke Calibration's website at [www.flukecal.com](http://www.flukecal.com).

To register your product, visit <http://flukecal.com/register-product>