

# MET/CONNECT 1.0.0 INSTALLATION GUIDE

This document includes information related to installing MET/CONNECT 1.0.0 and MET/CAL 10.0.0.

MET/CONNECT provides a way to use MET/CAL v10.0.0 without requiring the overhead of the MET/TEAM asset management software via a simple API that allows CMMS systems to connect and extract calibration results from MET/CAL procedure runs or a direct data file export.

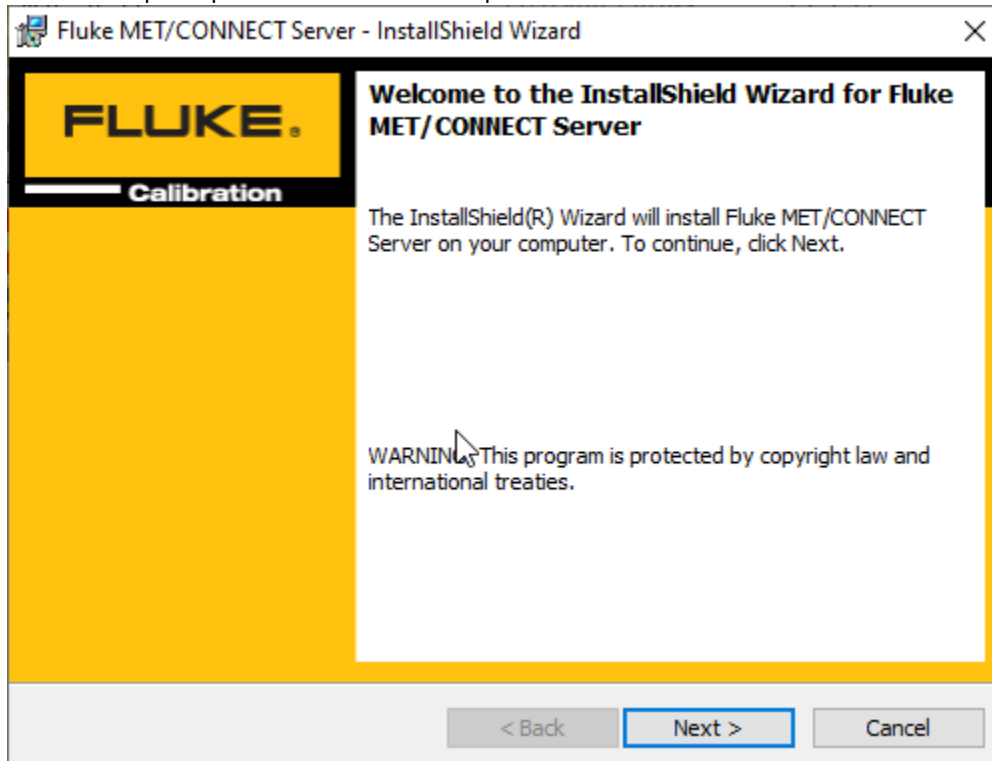
## THINGS TO CONSIDER BEFORE INSTALLING MET/CONNECT

1. Ensure you meet the system requirements:
  1. Windows 10 or Microsoft Windows Server 2012 R2 or later, 64-bit Operating Systems
  2. SQL Server 2016 or later
2. You must have an existing SQL Server instance installed before attempting to install MET/CONNECT Server. You can download the Express versions for free from Microsoft:
  1. SQL Server 2016 Express: <https://www.microsoft.com/en-us/download/details.aspx?id=56840>
  2. SQL Server 2017 Express: <https://www.microsoft.com/en-us/download/details.aspx?id=55994>
  3. SQL Server 2019 Express: <https://www.microsoft.com/en-us/sql-server/sql-server-downloads>

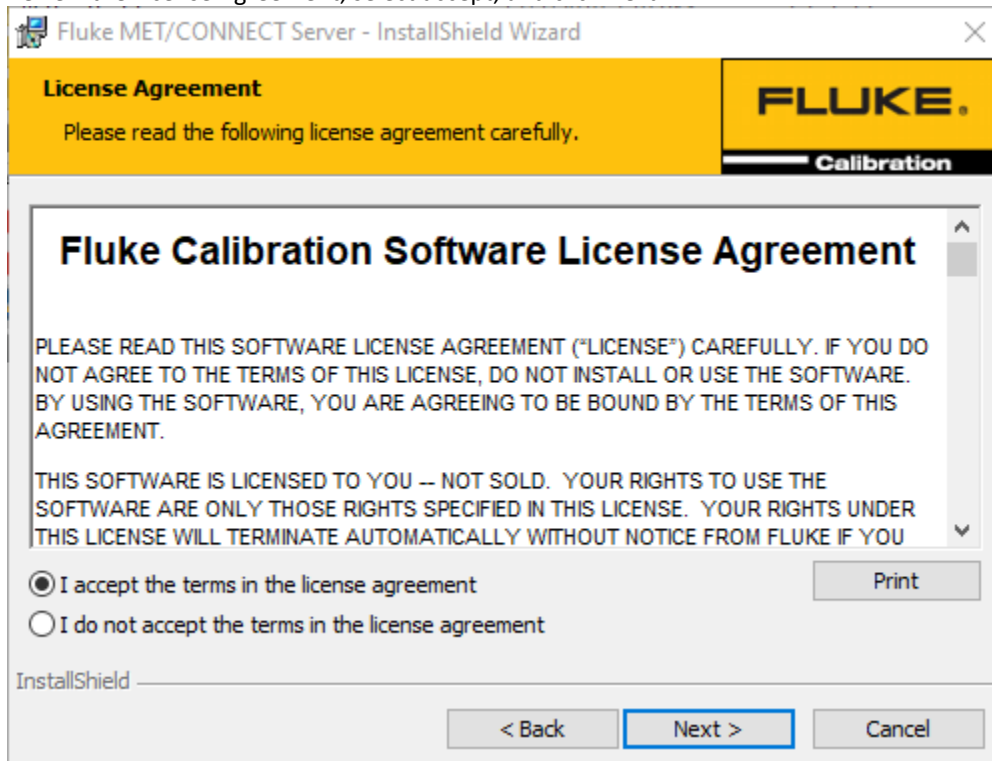
## INSTALLING MET/CONNECT SERVER AND API

1. Extract the contents of the MET/CONNECT Server Installer zip file to your C:\Temp directory.
2. Review the MET/CONNECT 1.0.0 Readme file and ensure you have all the prerequisites installed.
3. When you are ready to proceed, run the setup.exe file.
4. Depending on your security settings, you may receive a warning about unrecognized software. Select "Run anyway"
5. You will be prompted to install prerequisites for MET/CONNECT Server. Select Install.

- Wait for the prerequisite installation to complete. Then click Next.



- Review the License Agreement, select accept, and click Next.

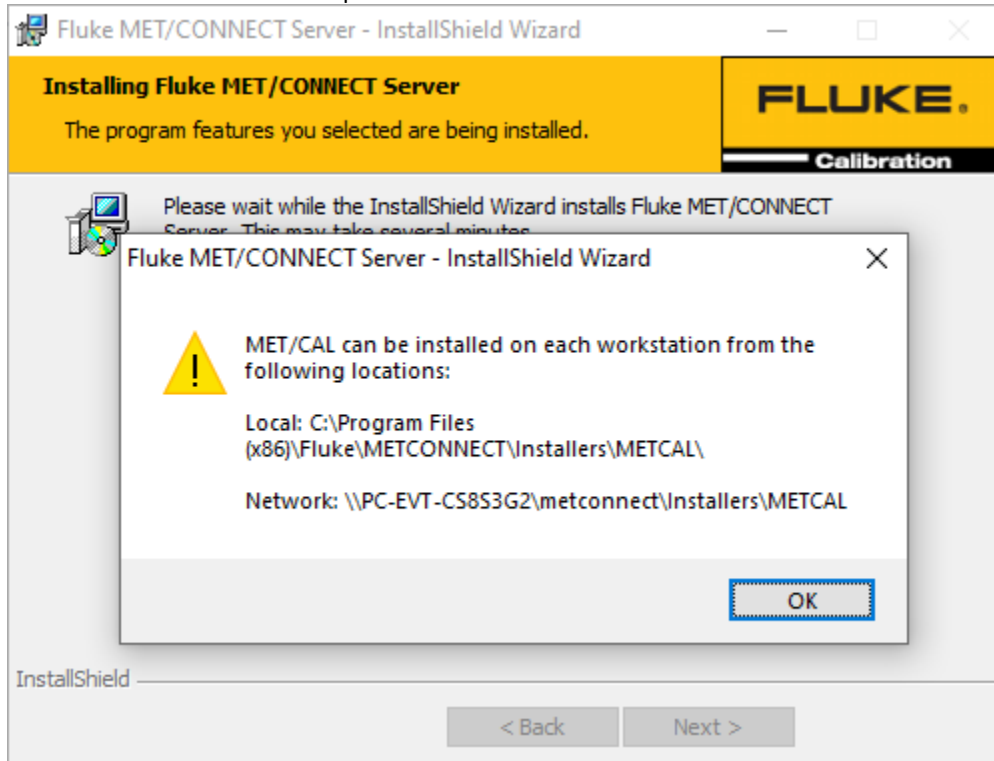


- Browse for the SQL Server instance that you want to use for MET/CONNECT (this should have been installed before starting the installation process). Enter credentials if required. Enter your desired

database name and click Next.

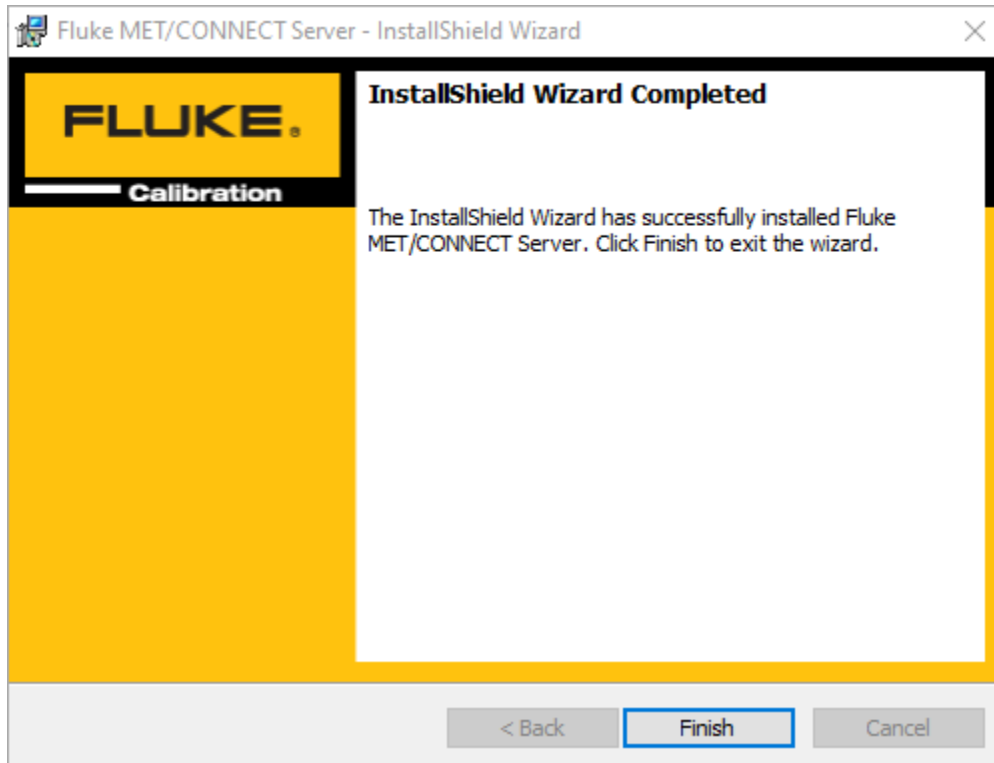
- The installer will verify the connection to the database. Click Install.

10. The installer will now configure two websites in IIS, one for the MET/CONNECT Service on port 6382 and one for the MET/CONNECT API on port 6381. It will also configure the MET/CONNECT Database using a default starting database. Then it configures the MET/CONNECT Shared Directory, which contains the Help files and MET/CAL Client installer files. A prompt will provide the location of this directory. It also deploys the MET/CAL Shared files and configures a shared directory. It configures the Windows Firewall to enable connections to the two ports noted above.



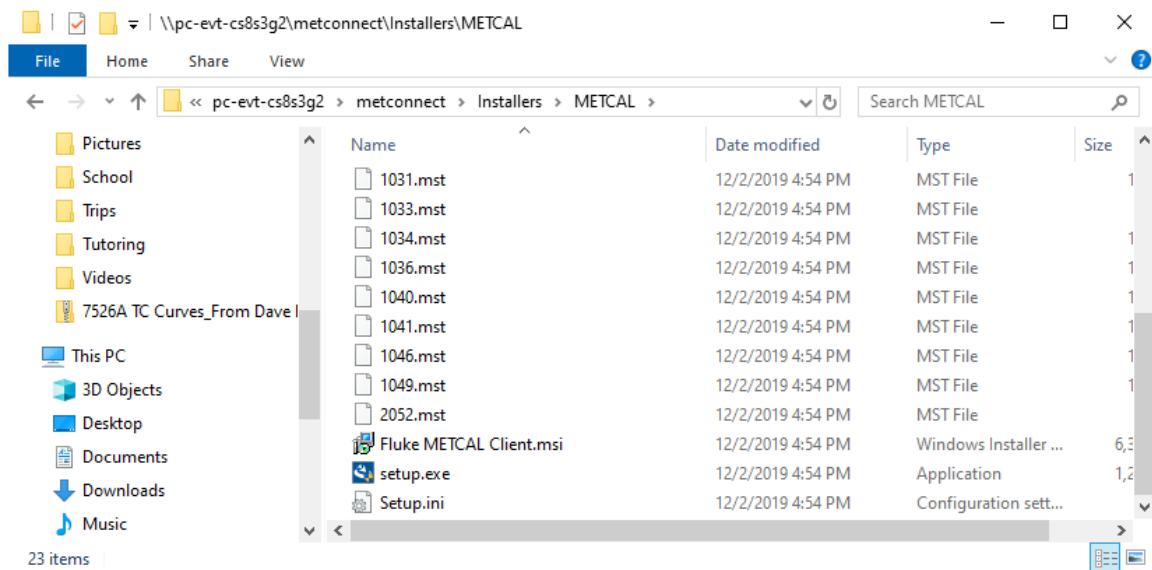
11. The installer will save a text file to the desktop of the PC/Server with the authentication key for the MET/CONNECT API.

- Click Finish to close the installer.



## INSTALLING MET/CAL RUNTIME AND EDITOR

- Go to the MET/CAL installer directory on the MET/CONNECT share (by default under \\<server\_name>\metconnect\Installers\METCAL).



- Run setup.exe.
- Click 'Yes' on any "Allow this app to make changes..." pop-ups.

4. If you do not have the Visual Studio 2012 Isolated Shell installed on your PC, the MET/CAL installer will install it for you. You will only need Visual Studio if you are using MET/CAL Editor. It may take up to 20 minutes, and two computer restarts. To continue with the install with Visual Studio, click "Yes" otherwise click "No".

If the logged-in user during the installation process does not have administrative rights on the PC, the installer will not automatically re-launch after required reboots during the installation process and will need to be launched again and the administrator credentials re-entered to proceed.

5. If you selected to install Visual Studio, a Visual Studio install screen will pop up.
6. Choose English as the preferred language. The current version only supports English.
7. The Fluke MET/CAL Installer Wizard will now open.
8. On the License Agreement InstallShield screen, click "I Accept" then "Next" three times.
9. You will be prompted to select whether to install the MET/CAL Runtime and/or Editor. If you did not install the Visual Studio Shell, you will not be able to install the Editor in this step.
10. Enter the name you would like to be listed as the procedure author in the box, then click "Next"
11. On the Shared Files screen, you have a choice:
  1. If you are installing MET/CAL on the same computer where the MET/CONNECT Server is installed, you leave the path to the local drive and click "Next"
  2. If MET/CONNECT is on a different computer, you need to select the "METCAL" network share that was created on the MET/CONNECT computer. If your shared directory is not already mapped to a drive on a client PC, you can use the Map Drive Letter button to configure a mapped drive for the installer to continue.
12. On the "Ready to Install the Program" screen, click "Install".
13. Several command line boxes and InstallShield dialogs may pop-up and go away. This is normal. Click "Finish" on any Install screens that come up.

Your installation is now complete!

Have any questions or issues?

Web support: <http://support.flukecal.com>

To submit a question, click "Submit a Request" on that support page.