

Manual Supplement

Manual Title:	8508A Getting Started	Supplement Issue:	1
Print Date:	September 2004	Issue Date:	9/13
Revision/Date:	2, 4/12	Page Count:	1

This supplement contains information necessary to ensure the accuracy of the above manual.
This manual is distributed as an electronic manual on the following CD-ROM:

CD Title:	8508A
CD Rev. & Date:	6, 3/2013
CD PN:	2150143

FLUKE®










Calibration

Change #1, 66660

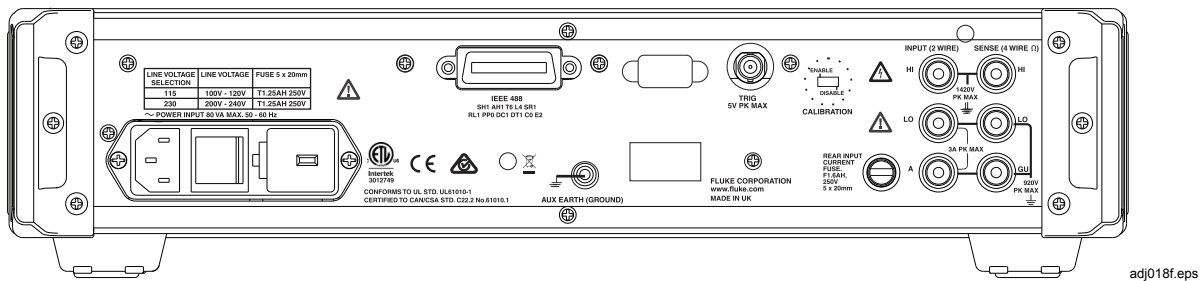
On page 3, Figure 1, remove IEC 127 from the Fuse Rating.

Under **General Safety Summary** remove the first and second paragraphs.

On page 5, replace the **Symbols** table with:

Symbol	Description
	Risk of danger. Important information. See manual.
	Hazardous voltage. Voltage >30 V dc or ac peak might be present.
	AC (Alternating Current).
	Power ON / OFF
	Functional Earth ground.
	This product complies with the WEEE Directive (2002/96/EC) marking requirements. The affixed label indicates that you must not discard this electrical/electronic product in domestic household waste. Product Category: With reference to the equipment types in the WEEE Directive Annex I, this product is classed as category 9 "Monitoring and Control Instrumentation" product. Do not dispose of this product as unsorted municipal waste. Go to Fluke's website for recycling information.
	Recycle.
	Product conforms with the requirements of the applicable EC directives.
	Intertek ETL listed mark for CSA C22.2 61010-1, and UL 61010-1.

On page 12, replace the **Rear Panel** Figure 5 with:



adj018f.eps

Figure 5. 8508A Rear Panel Detail