

Reading memory cards from Hydra 2635A Data Bucket in a PC card slot

Application Note

It is possible to read the memory cards from the Hydra 2635A Data Bucket in a PC card (PCMCIA) slot. However, when a user inserts the memory card into the PC slot, the computer does not seem to recognize it.

This is actually an issue in the Microsoft Windows® operating system. Windows XP and 2000 include drivers to read SRAM cards, which used in the Hydra 2635A, but Windows does not “plug-and-play” with SRAM cards. Although Windows does not automatically install a driver, you can install it manually.

The instructions in this application note explain how to install a driver manually for an SRAM card in Windows XP.

Installing SRAM card driver on the Windows XP operating system

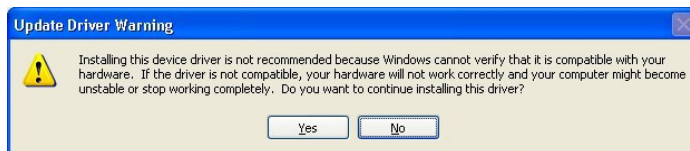
- Insert the SRAM memory card into PC card (PCMCIA) slot.
- A “Found New Hardware” message will appear.
- After a few moments, the Found New Hardware Wizard starts.
- If the first window asks to connect to Windows Update, select **“No, not this time”** and press **Next**. (If a different Found New Hardware Wizard window appears, go to the next step below.)
- In the Found New Hardware Wizard, select **“Install from a list or specific location”** and press **Next**.



- On the next window, select **“Don’t search. I will choose the driver to install.”** Press **Next**.



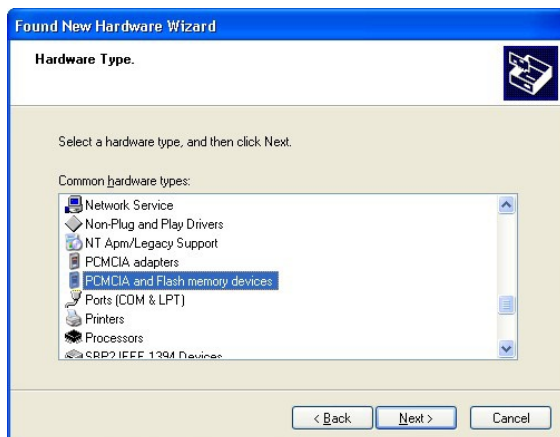
- When the Update Driver Warning appears, press **Yes** to continue installing the driver.



- The New Hardware Wizard will install the driver files.



- Choose **“PCMCIA and Flash memory devices”** as the Hardware Type and press **Next**.



- When the wizard has completed installing the driver, press **Finish**.



- Choose **“Generic”** for the Manufacturer and **“Generic PCMCIA Memory Card”** as the Model. Press **Next**.



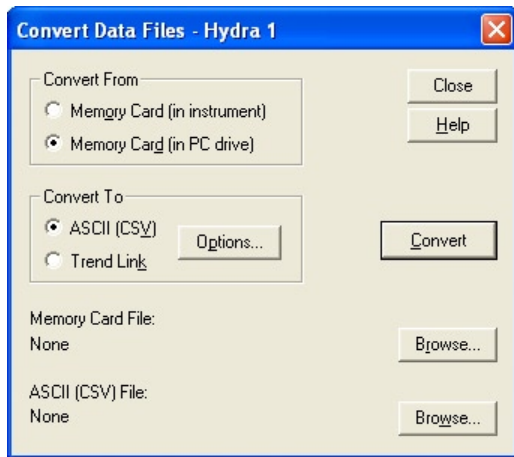
This completes the Memory Card driver installation for this SRAM card. (However, if you insert a different manufacturer, model, or size of memory card, you will need to install the driver again for that card.)

You need to know the drive letter that Windows created for the memory card when you inserted it. If Windows does not open the memory card automatically, go to My Computer and find for the drive letter of the new Removable Disk drive.

Converting data files

The 2635A Hydra Data Bucket creates memory card data files in a binary format to save space on the card. To use the data on your host computer, you must convert the file to a common format that can be recognized by other application software, i.e. a CSV (Comma Separated Value) text file.

To do this in Hydra Logger software, pull down the **Mem Card** menu and select **Convert Data Files** to open the Convert Data Files dialog box.



To copy and convert a memory card data file from a memory card in the PCMCIA slot, select the following:

Convert from

Select the Memory Card (in PC drive) button, since the memory card is in a host computer drive. (The Memory Card (in instrument) choice is used for a memory card in the Hydra instrument.)

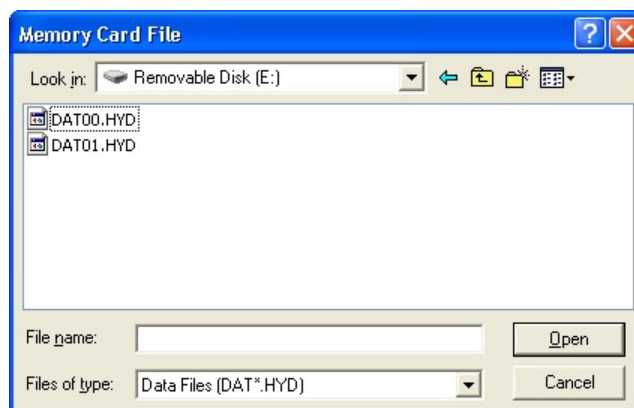
Convert to

Select the ASCII (CSV) button to choose the general-purpose text CSV file format (described in Chapter 3 and Appendix A of the Hydra Logger Users Manual).

(The Trend Link format is used with the Trend Link for Fluke application software.)

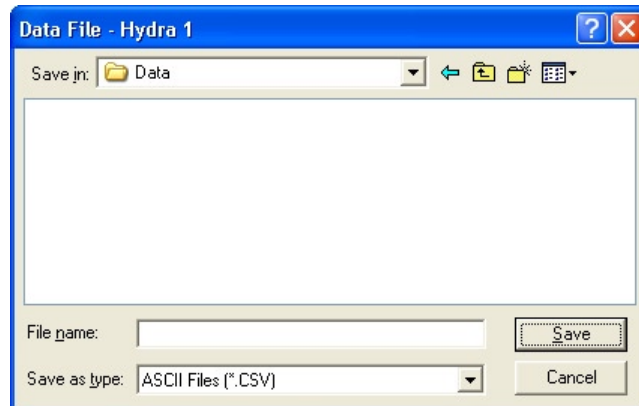
Memory card file

Use Browse to choose the binary data file (DAT##.HYD) on the memory card to convert (as shown). Select the drive letter for the removable disk drive created by Windows when you inserted the memory card in the computer's PCMCIA slot.



ASCII (CSV) file

Use Browse to select or enter a destination drive, path and file name for the converted data file (as shown below. Remember that you typically would not put the CSV data file on your memory card, since there may not be enough room.)



Convert

After both a Memory Card File name and a host computer data file name have been selected, click the Convert button to convert the memory card file to CSV. The Hydra Logger software copies the binary data file from the memory card and then converts it to the destination CSV data file.

You now can open the converted data file with another software application. If you have Microsoft Excel® spreadsheet software installed, for example, the CSV files will open in Excel when double-clicked in Windows.

Fluke. *Keeping your world up and running.®*

Fluke Corporation
PO Box 9090, Everett, WA 98206 U.S.A.

Fluke Europe B.V.
PO Box 1186, 5602 BD Eindhoven, The Netherlands

For more information call:
In the U.S.A. (800) 443-5853 or Fax (425) 446-5116
In Europe/M-East/Africa +31 (0) 40 2675 200 or Fax +31 (0) 40 2675 222
In Canada (800)-36-FLUKE or Fax (905) 890-6866
From other countries +1 (425) 446-5500 or Fax +1 (425) 446-5116
Web access: <http://www.fluke.com>

©2008 Fluke Corporation.
Specifications subject to change without notice.
Printed in U.S.A. 10/2008 3392888 A-EN-N Rev A
Pub_ID: 11499-eng, rev 01

Modification of this document is not permitted without written permission from Fluke Corporation.