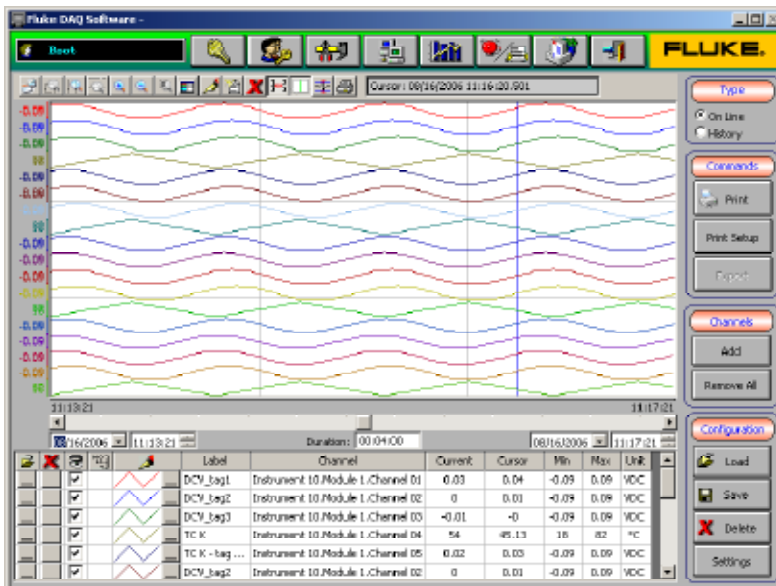


Application, Trending and Development Software for Fluke NetDAQ® and 2680 Series Data Acquisition Products

Technical Data

Fluke DAQ 4.0 Application Software (2680A-APSW)



- Program can be modified using development software (2680A-DEVSU)
- 2000-channel capability (expandable to 56K channels through additional license)

Fluke DAQ 4.0: versatile and powerful

Trend screen. Up to 21 trends on one graph with new abilities to save and load charts, Auto Scale, multiple and single section display, horizontal and vertical click-on-chart region zoom, full grid control.

Print capability. Print trend charts and alarm status information, both in the local PC software and from the Web view.

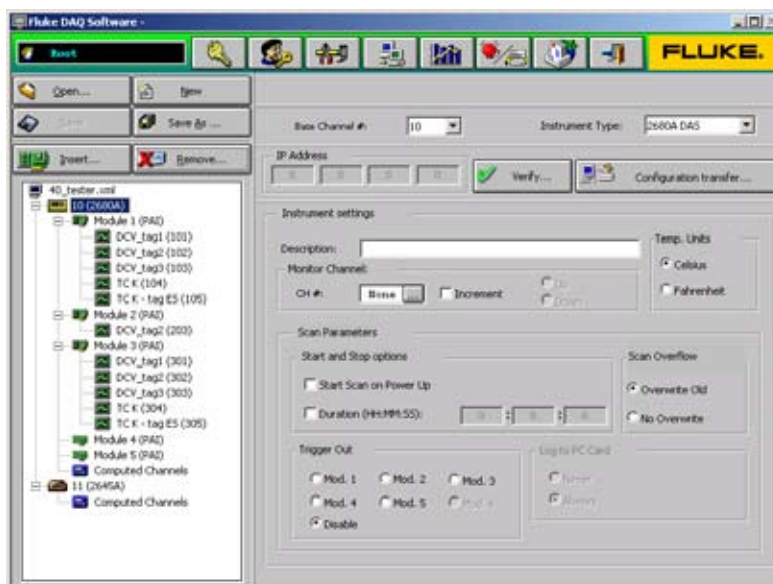
Web view. In addition to current readings, the Web view feature allows users to display trend charts and the alarm screen in a Web browser. Four Web clients allow password secure connections from up to four remote users simultaneously.

Web view and control. Instrument scanning can now be started and stopped remotely from the Web view screen in a browser, using the four thin web clients within Fluke DAQ.

Fluke DAQ is a powerful configuration and application software that drives the NetDAQ and 2680 Series data acquisition products. This program is praised by users as a versatile program for data acquisition and logging. Improved trending, file handling, added web interface, web control, convenient print functions for charts and graphs and multiple language improvements make this version of Fluke DAQ a feature rich update. Fluke DAQ 4.0 is truly a program you can trust with your important data and analysis needs.

Fluke DAQ 4.0 features

- Easy configuration of Fluke NetDAQ and 2680 Series
- Exceptional data file management tools
- Advanced trend display and viewing tools – print functions
- Logon security features
- Auto start on power interrupt
- Alarm logging with acknowledgement features
- Web viewing and control of system using secure login
- Email alarm functions
- Change configuration while running



Indusoft Web Studio Development Software (2680A-DEVSW)

The building block for larger systems

One of the unique features of Fluke DAQ software is the ability to add on custom program functions. Using the Web Studio 2680A-DEVSW development suite, users can add specific application "screens" to the existing Fluke DAQ program. For example, users can build special operator views that depict their process; create special and automated reports; interface with a wide variety of databases and equipment; build mini-control and report programs for PDAs using the Microsoft CE platform; and much more. Users can build almost any functionality into Fluke DAQ and are not limited to a "canned" configuration package.

Alarm page. Fluke DAQ alarm page gives the operator a full page view of past and present alarm conditions. The operator has full control over alarm acknowledgement and history viewing. Alarms may be selected to email with messages on alarm conditions.

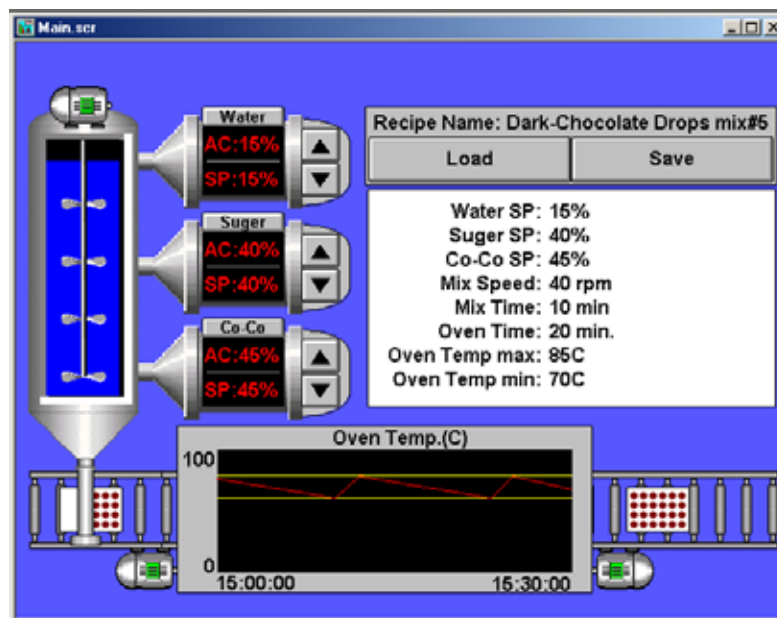
Easy instrument setup. Simply connect your instrument to your computer, and the hardware configuration will pre-populate a new instrument configuration file, saving time in building setups.

Off-line operation. Instruments can be left scanning when the Fluke DAQ 4.0 application shuts down. Start the program again and Fluke DAQ 4.0 software reconnects to your instruments and resumes data retrieval and control.

Import/export configuration files. The Fluke DAQ 4.0 software configuration is saved in XML format, which allows the configuration to be easily imported, exported and edited.

Automatic start scan. Fluke DAQ 4.0 can be easily set to start scanning automatically when your computer is started. This allows unattended operation or automatic scan resuming after a power failure.

Multi-lingual. Version 4.0 speaks your language and can be switched from one language to another during operation. Languages in Fluke DAQ include English, Spanish, Swedish, Russian, Korean, Japanese, Italian, German, French and Chinese.



This is Fluke DAQ, modified using the 2680A-DEVSW development suite. The user wanted to add a screen to the Fluke DAQ software to give his operators quick, easy-to-understand data.



These custom pages incorporate into Fluke DAQ with relative ease and add tremendous value for the user.

Web Studio features

- Creates sophisticated, animated interfaces with point-and-click, drag-and-drop ease
- Imports graphics from more than 15 different formats for enhanced graphics
- Customizable object properties such as animation, scale, text I/O blocks, rotation, positioning, color and resizing
- Extensive symbol library to simplify development
- View and control your application remotely using web thin clients
- Interfaces with multiple database types
- Advanced math library with over 100 functions
- Publishes custom reports and trend graphs
- Extensive development support tools
- Conforms to Microsoft .NET, OPC, DDE, ODBC, XML, SOAP, ActiveX

OPC Server Software (2680A-OPC)

OPC is a standard interface for passing data and communicating information between programs and devices in the Windows environment. When using the 2680A-OPC software, client programs such as National Instruments LabVIEW™, Canary Labs Trend Link, Wonderware® software and many others may request real-time or historical data from the Fluke DAQ database.

Trend Link for 2680 Series (2680A-904)

Trend Link for 2680 Series is an advanced trending and analysis software package that can be used to chart information in real time from the Fluke DAQ (2680A-APSW) program.

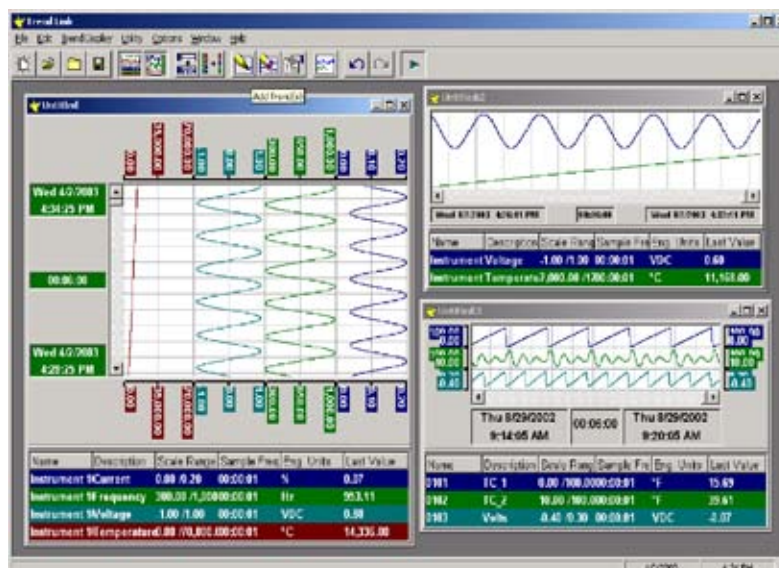
Trend Link works through the 2680A-OPC to request data from Fluke DAQ software. This data is then trended on a custom developed chart produced by the user.

Trend Link has full control over chart features, allowing you to change scaling, superimpose trends, change chart direction, set visual alarms and much more.

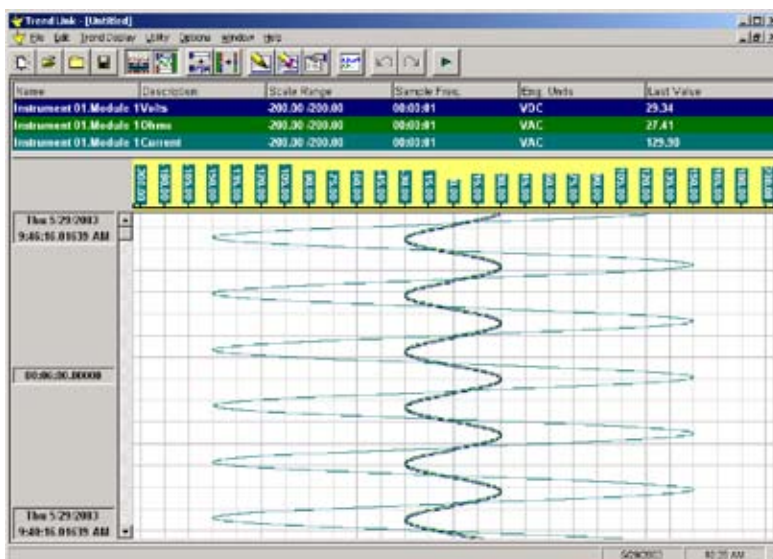
Trend Link (2680A-904) gives an important visual dimension to your data with a tremendous amount of flexibility.

Trend Link features

- Multiple trend and analysis tool with OPC interface
- Flexible display and scale options
- Multiple chart instances offers a variety of trend displays open at the same time
- “Smart” gridline controls allow even, graduated spacing and color selection



Setting multiple charts on one screen is an easy way to view different processes simultaneously. Charts are easily sized within windows to suit your viewing needs.



Superimposing trends on the same scale gives a balanced view of proportion and timing of process variables.

Requirements for all programs

- 700 MHz processor or greater
- Windows 2000 or later
- Free disk space – 400 MB

Ordering information

Model	Description
2680A-APSW	Fluke DAQ Application Software for 2680 Series
2680A-DEVSW	Web Studio Development software by Indusoft
2680A-OPC	OLE for Process Control Communication Module
2680A-904	Trend Link for 2680 Series

Fluke. *Keeping your world up and running.™*

Fluke Corporation

PO Box 9090, Everett, WA USA 98206

Fluke Europe B.V.
PO Box 1186, 5602 BD
Eindhoven, The Netherlands

For more information call:
In the U.S.A. (800) 443-5853 or
Fax (425) 446-5116
In Europe/M-East/Africa (31 40) 2 675 200 or
Fax (31 40) 2 675 222
In Canada (800)-36-FLUKE or
Fax (905) 890-6866
From other countries +1 (425) 446-5500 or
Fax +1 (425) 446-5116
Web access: <http://www.fluke.com>

©2007 Fluke Corporation. All rights reserved.
LabVIEW is a trademark of National Instruments.
Wonderware software is a registered trademark of Wonderware, a business unit of British-based Invensys plc. Information subject to change without notice.

Printed in U.S.A. 1/2007 2806282 D-EN-N Rev A
Pub ID_11194-eng Rev 01